

FLIR T420 & T440

High Performance Infrared Camera With on-board Visual Camera, Thermal Fusion, Touch Screen, Wi-Fi Connectivity, & Interchangeable Lens, Plus MSX™ Image Enhancement & FOV Match

Get maximum flexibility and efficiency out of 320 x 240 thermal imaging from our new T400 line:

Superior Thermal Imaging – Sharp thermal resolution at 76,800 pixels for solid accuracy from farther away

New! MSX™ Enhancement – Multi-Spectral Dynamic Imaging adds visible spectrum definition to IR images in real time for extraordinary thermal detail that instantly highlights and orients problem locations (T440 only)

New! Field of View (FOV) Match – Now you have the option to automatically match the visible camera field of view to the IR FOV for better documentation

Wi-Fi Connectivity – Send images and data to smart phones and tablets (ie. iPhone®, iPad®, iPod touch®, or Android™) to share images and critical information quickly using FLIR Tools Mobile app

Accurate Temperature Measurements – Accuracy calibrated within +/- 2°C or +/- 2% of reading

High Temperature Range – measuring up to 2192°F (1200°C) targeting electrical and industrial applications (T440 model)

Scalable P-i-P and Thermal Fusion – Blend thermal with visible light images on-screen; includes picture-in-picture window sizing

Multiple Measurements – Add up to 5 box areas and 5 moveable spots using the touchscreen to gather more detailed information

METERLiNK® – Wirelessly transmit vital diagnostic data from clamp and moisture meters directly to the camera for annotating thermal images to further support findings and decisions

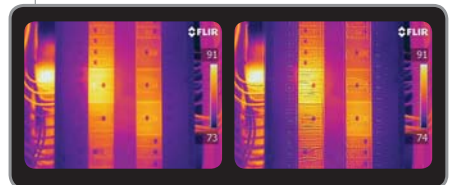
Annotation – Add voice comments via Bluetooth headset and text notes from the touchscreen keypad; New! T440 has image sketch feature to draw circles and pointers on IR/Visual stored images

InstantReport – Create PDF document directly from the camera

Includes – SD Memory Card, 100-260V AC adaptor/charger, two Li-Ion rechargeable batteries, 2-bay battery charger, power supply (with multi-plugs), FLIR Tools software, USB cable, video cable, sun shield, Bluetooth® headset, lens cap, neckstrap, and hard case



Wi-Fi Connectivity



Original IR Image on the Left and with MSX™ Enhancement on the Right image (available on T440 model)



Built-in 3.1MP Digital Camera, LED Lamp, Laser Pointer, Fine Focus Adjust, and Auto focus & Image Capture Button. 120° Rotating Lens with 8X Continuous Zoom



Thermal Fusion is an Infrared image shown above, below or within temperature interval blended onto a digital image



Wireless METERLiNK® Communication via Bluetooth®



Applications

Imaging Specifications

FEATURES	FLIR T420	FLIR T440
Temperature range	-4°F to 1202°F (-20°C to 650°C)	-4°F to 2192°F (-20°C to 1200°C)
Zoom	4X Continuous	8X Continuous
LCD Image Sketch	—	Draw on stored images right on touchscreen
Multi-Spectral Dynamic Imaging (MSX)	—	IR image with enhanced detail presentation
Measurement Presets	—	Presets for standard measurements
Profile Measurement Analysis	—	Shows a live graph of temperatures across a line on the image
COMMON FEATURES		
Frame Rate	60Hz	
Field of view/Minimum focus distance/FOV Match	25° x 19° / 1.31ft (0.4m) / Field of View Match where Digital Image FOV adapts to the IR lens	
Focus	Manual/Automatic	
Thermal sensitivity (N.E.T.D)	<0.045°C at 30°C	
Detector Type - Focal plane array (FPA) uncooled microbolometer	320 x 240 pixels	